



# D.T.MUX™ U/HDCAM/MIC

## Cockpit Video Camera & Area microphone



# Cockpit Video Camera & Area microphone

## Video full HD or Ultra HD (4K) Camera and Area Microphone

**Optional fully integrated Video/ Audio Microphone solution in a compact size**

A perfect solution for video/image cockpit needs, while offering in the same box, an area microphone, and **Full HD** or **Ultra HD 4K** video camera resolution. Cockpit camera boasts approximately 2 or **8.51 Megapixels** for



exceptional full HD or Ultra HD picture quality. This device covers the new needs for image/Video recording systems class A, B and C with Sentinel product line.

*4K Large angle night cockpit view of AIRBUS A380 with UHDCAM-MIC*

The high-performance 1/2.5-type Sony™ Exmor R CMOS image sensor achieves superb 4K (QFHD) picture quality. Using the latest Sony sensor technology, the UHDCAM-MIC can produce high quality images even in a wide variety of lighting conditions.

### **Get a steadier picture with image stabilizer**

The camera's built-in image stabilizer function counters the effects of blurred, shaky images caused by low-frequency vibration. It's useful for rotary wing and propeller aircraft cockpit surveillance applications where the camera may be subject to high vibration.

### **Advanced 2D/3D Noise Reduction**

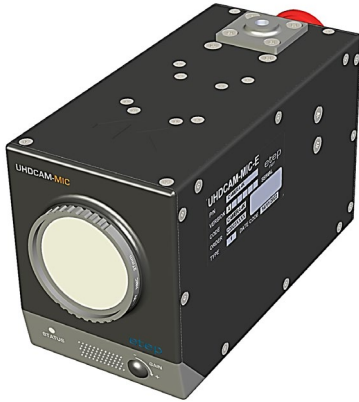
Advanced noise reduction technology filters noise from the image for clearer results, especially in low light conditions. Noise reduction can be selected from six steps to suit a wide range of operating environments.



*Night Cockpit view of EC-135 Helicopter with HDCAM-MIC*

### Auto ICR (Auto IR-cut Filter Removal)

In low light conditions the camera automatically switches from day to night mode, removing the IR-cut filter to boost sensitivity for clear pictures in near-darkness.



- All in one video and audio Microphone solution.
- Ultra HD (3820x2160 pixels) until 30fps video resolution.
- Full HD (1920x 1080 pixels) until 60fps video resolution.
- Cockpit Area Microphone ED155A/ED112B compliant.
- Perfect for ED112B/155A AIRS CLASS A, B and C needs.
- Integrated H.264/H.265 Compression.
- Compact size and lightweight.
- SD card quick access memory integrated (Video/Audio).
- Time synchronization GPS Antenna or RS232 / PTP / NTP
- Rugged for airborne use (Qualified DO-160 cockpit condition).
- Lightweight all in one solution ~ 750gr.
- Power consumption around 6Watts.

### 4K/Full HD Ethernet Camera features

- Until 4K Ultra HD 2160p 30fps (3840x2160px) picture quality.
- Integrated Zoom x20 for easy installation.
- Include Image Stabilizer.
- High Sensitivity mode – 0.4 lux (Minimum illumination).
- Angle of view: 70.2° (wide end) to 4.1° (tele end).
- Spherical Privacy Zone Masking (24 Zones).
- Noise Reduction, Defog, Visibility enhancer, Colour enhancement, Gamma level.
- UV Lens integrated (can be replace by another lens).
- Mounting by Universal 1/4-20 UNC screw or customized.
- POE wiring available (Power over Ethernet).
- Ultra-capacitor included to sustain 6000ms of power cut.
- Integrated Removable SD card for quick access to video Audio Data.
- Ethernet interface for camera settings and data download.
- GPS Input for time/Position video overlay and file dating.
- Interchangeable Lens (to adjust angle of view).

### HD-SDI Camera features

- Excellent Full HD 1080p (1920 x 1080 px) picture quality
- Integrated Zoom x10 for easy installation
- High Sensitivity mode – 0.5 lux (Minimum illumination)
- Angle of view: 55.4° (wide end) to 2.9° (tele end)
- Spherical Privacy Zone Masking (24 Zones)
- Lens integrated (No additional lens required)
- Mounting by Universal 1/4-20 UNC screw
- POE wiring available (Power over Ethernet).
- Ultra-capacitor included to sustain 6000ms of power cut.
- Integrate Removable MicroSD card for quick access to video Audio Data



### Integrated Area Microphone feature

- Microphone Preamplifier
- High Sensitivity with Gain control
- Compliant ED-155A and ED-112B



### Interface

- **J1 Connector:**
  - Ethernet (GbE) Interface (UHD Ethernet version)
  - Analog Microphone Audio output
  - RS-232 GPS Protocol (Ethernet version)
  - RS-232 Camera configuration (HD-SDI version)
- **J2 Connector**
  - Input 28VDC (16 to 36 V)
- **J3 Connector**
  - HD-SDI Camera output (HD-SDI version)
  - GPS input (UHD Ethernet version)

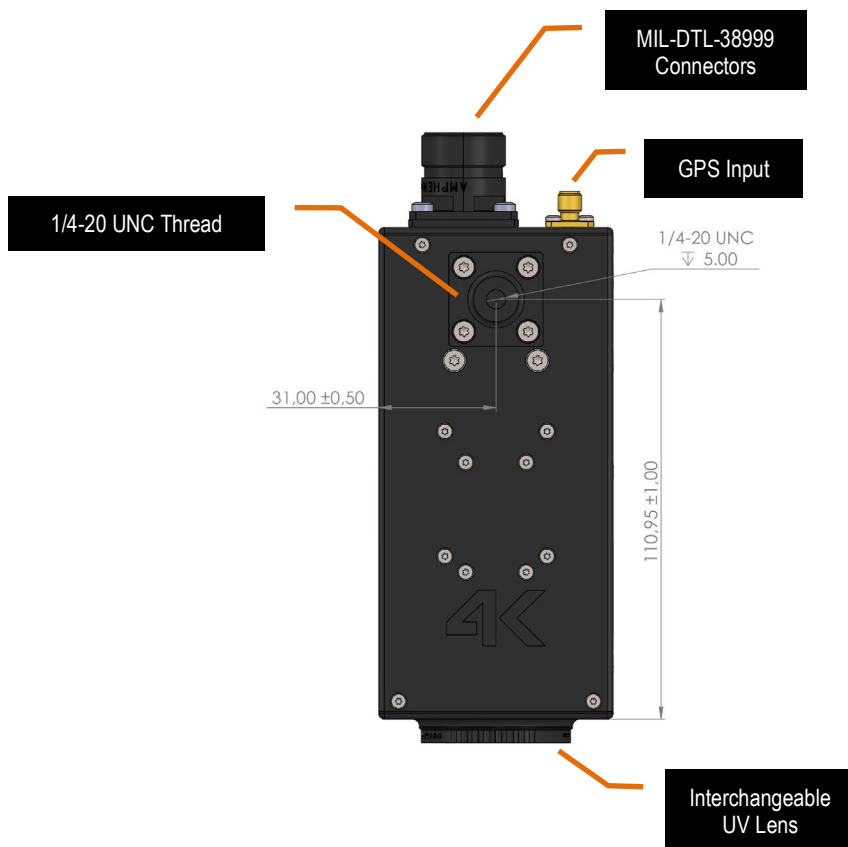
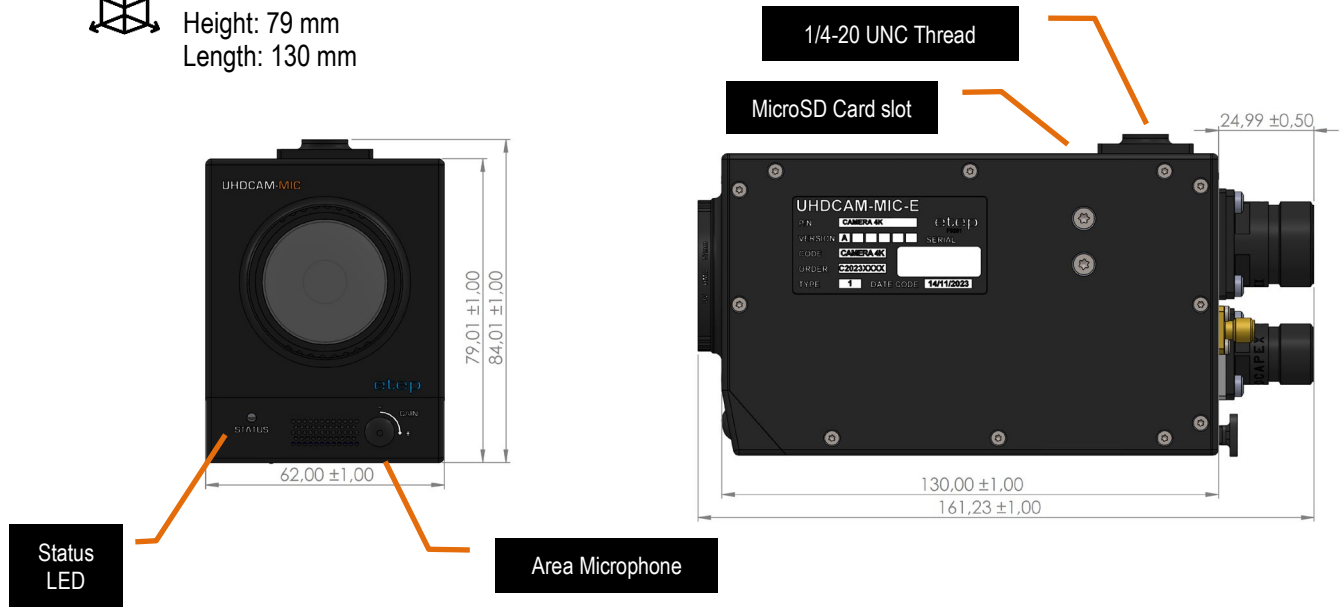
### Part number Selection



*\*Ultra HD 4K (2160p) version is automatically in ethernet version*

### Ultra HD Camera Ethernet Version

**Dimensions**  
 Width: 62 mm  
 Height: 79 mm  
 Length: 130 mm

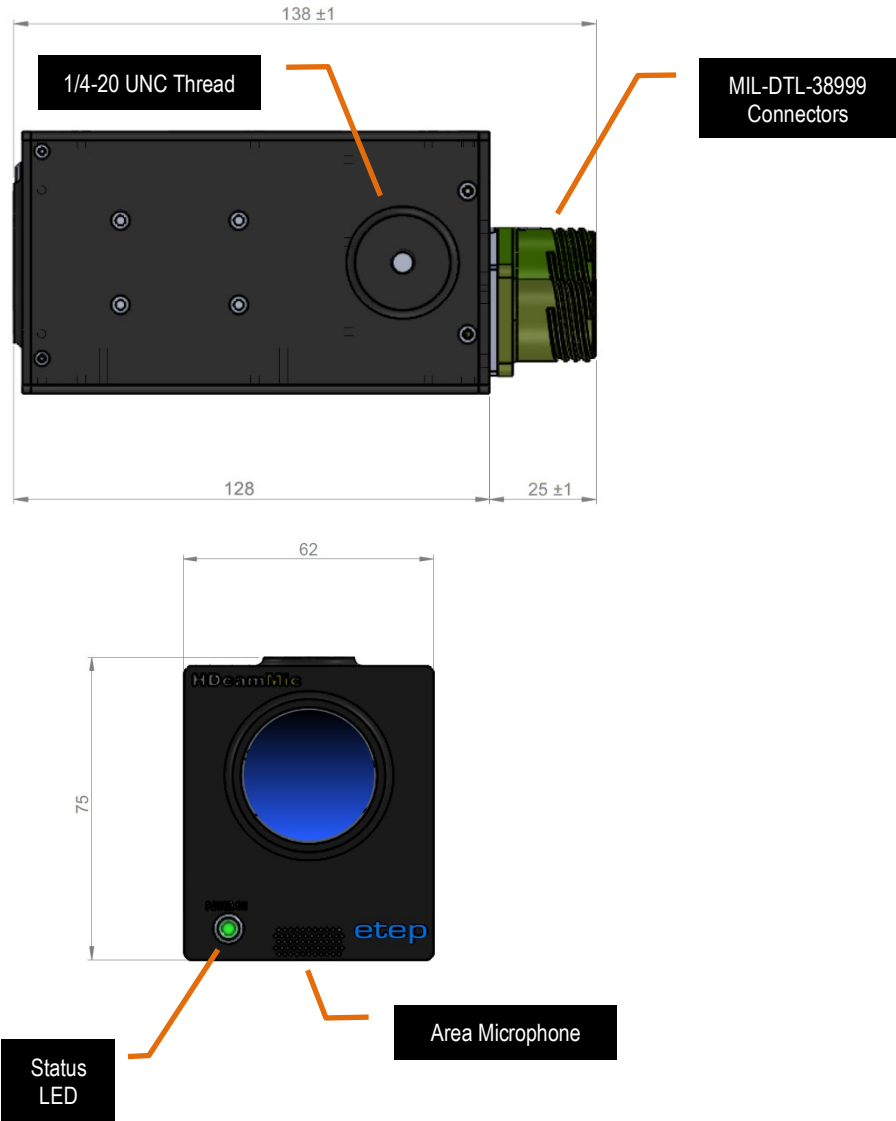


### HD Camera HD-SDI/Composite Version



#### Dimensions

Width: 62 mm  
Height: 75 mm  
Length: 128 mm





National Police Air Service  
Copyright © 2020

#### ETEP Headquarters

#### Sales & Support :

380 rue de l'Initiative,  
ZAC des Bousquets  
83 390 Cuers, France

Website [www.etep.com](http://www.etep.com)

P : 00 33 4 94 08 50 26

Email [contact.us@etep.com](mailto:contact.us@etep.com)

F : 00 33 4 94 08 28 03

ETEP is an ISO 9001 v2015 certified company/ NATO identification code NCAGE: F9281

ETEP is an AS/EN 9100 v2018 certified company.

ETEP, D.T.MUX and D.T.MUX RECORDER are registered trademarks of etep, registered in the FR.

Sentinel™ is an unregistered trademark for crash protection system recorder.

All other trademarks are the property of their respective companies.

**D.T.MUX™**  
**U/HDCAM/MIC**

Copyright © 2024 ETEP Company

Image illustrations are the property of ETEP Company

