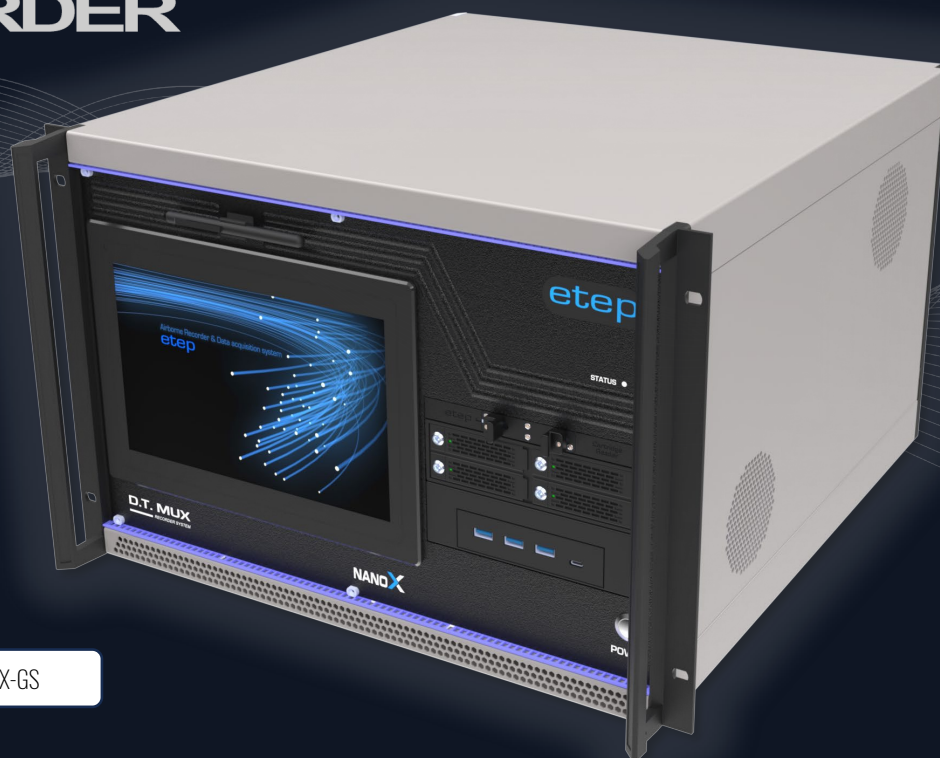


D.T.MUXTM RECORDER



Reference: DT-MUX-GS

D.T.MUX Ground Station

Telemetry receiver / Acquisition Systems / High Speed Recording / Real time Data Viewing / Real time Data reproducing / Data Replay and Post-processing

D.T.MUX RECORDER/REPRODUCER system unit does the recording of all channels in same time with Realtime monitoring & reproducing of analog and digital data through decom software or physical outputs.

The Acquisition/Restitution modules are based on D.T.MUX NanoX Modules. The unit can receive until 16 Acquisitions/Restitution modules through a backplane panel receiver on rear panel side. The unit is completely flexible and scalable.

NANO X
THE NEXT LEVEL OF DATA ACQUISITION

- A distributions panel can be fitted for easy plug like BNC or other lab connectors.
- The System can work with ETEP "D.T.MUX Viewer" Software or another post processing software based on Irig 106 Chapter 10.

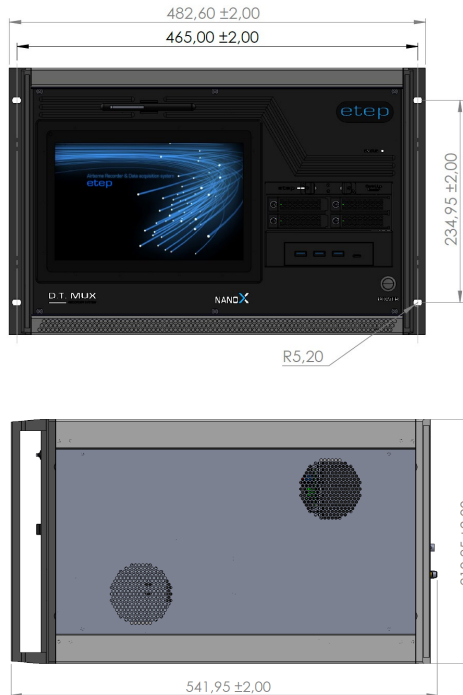


The rear panel offers full compatibility with NanoX acquisition and playback modules

etep

MECHANICAL

	Specification	Remark
Size (S)	7UPC 19"	Standard
Weight	≈ 18Kg	≈ 38lbs
Connectors	83513 or Patch panel	Customizable
Mounting	19" Rack panel	Customizable



ELECTRICAL

Input Voltage	100 – 240 V AC
Input Frequency	50 / 60 Hz
Power Consumption	≈ 350 W Nominal

ENVIRONMENTAL

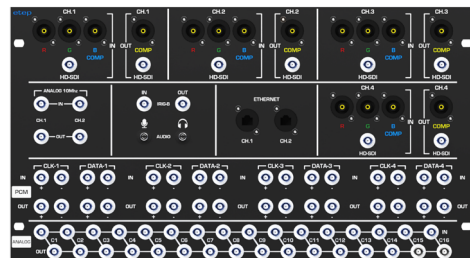
	Specification	Remark
Temperature	-15°C to 55°C	Operating
	-20°C to 85°C	Storage
Cooling	Active	Fans
Humidity	85%	Non-Cond
Vibration	1Hz to 50Hz	0.22 g RMS
Shocks	20g 11ms	Operating
Altitude	+ 15,000 ft	Operating
MTBF	> 50,000 hours	Computed

PATCH PANELS

To avoid use of MICRO D (MIL-DTL-83513) from NanoX modules a patch panel can be directly integrated on the rear chassis, allowing input/output signals to be connected via standard BNC/RCA/SMA, or other connectors



An external 19" patch panel is also available for configurations with a high number of inputs/outputs, or to relocate the I/O connections away from the rear of the device.



STANDARD FUNCTIONALITY

	Specification
OS	Windows 11 Pro
Software(s)	D.T.MUX Viewer / Other Post Processing software compatible with Irig 106 Chapter 10
Storage	RAID Controller (Until 32TB)
GbE	Configuration/Control
Ethernet	Data download and Streaming
Time synch	GPS Antenna input / Irig B / PTP v2
Audio	Input/Output
Recording	IRIG 106 Chapter 10 / DTMUX format
COM port	RS-232 Configuration/Maintenance
LED	Status / GPS / IRIG B

SELECTABLE CHANNELS

The system is fully compatible with the NanoX platform. Please refer to the NanoX catalogue to select the appropriate acquisition and restitution modules for your architecture.